

FREE

Basic Dollmaking

With Sculpey Flexible Push Molds



Let your imagination take shape!

Basic Doll Making Technique

DOLL HEAD:

- Condition Premo! Sculpey beige clay by warming and kneading in your hands.
- Form a ball of clay to fill the push-mold section.
- When clay is smooth, extend one end of the clay ball to form a cone shape.
- Place the point of the cone into the nose area, and gently push the remainder of the clay cone into the face mold.
- Press clay into the ears, hands and feet sections of the push mold. Fill these areas so that they are nearly level with the top of the mold.
- For an easy release, put the mold into the freezer for several minutes.
- Remove the mold from the freezer, and "pop" your molded face out by pressing from the backside of the mold. It will come out like an ice cube.



- Gently insert a toothpick at the base of the face in the neck area. The toothpick will give you something to hold onto as you form the back of the head and neck. Roll a small ball of clay and press to the back of the head.



- Using your fingers, dipped in water, smooth the seams together.
- Roll a log of clay and wrap it around the bottom of the head. This piece becomes the neck and can be smoothed as shown below.



- Add the ears to the side of the head by pressing them in place, and smoothing the contact points with a blunt tool and your fingers.



BRINGING LIFE TO THE FACE: BEFORE BAKING

- Using powdered blush make-up or soft pastel chalk, brush color onto the cheeks of your doll. For more life, blush the forehead, tips of the nose and chin. If using soft pastels, a small amount of gray under the eyes can be added.



- Gently remove the toothpick from the neck area. Cradle the head in a small piece of fiberfill, placing it on a large baking sheet. Do not allow the fiberfill to extend to the edges of the baking sheet.
- Bake the head at 275° F (130° C) for 30 minutes per 1/4 inch (6mm) of thickness. (We recommend you calibrate your oven by checking its actual temperature on an external thermometer as compared to the dial reading. Adjust up or down accordingly.)
- Remove the head from the oven and let cool.

BRINGING LIFE TO THE FACE: AFTER BAKING

- Using your white gel pen, color the entire inside eye area. If you are skilled in using acrylic paints and a fine paintbrush, use a white base paint. Allow each coat to dry.
- Line the top and bottom lids with brown.



- Add a circle of black in each eye. When dry, add a circle of light blue, filling the black circle almost completely. Leave a rim around the blue circle so that the eye will be more visible. Add a smaller black circle in the center of each eye for the pupil. Highlight the top of the pupil with a tiny speck of white. A dot of red can be added at each inside corner of each eye, near the bridge of the nose.



- Use a red gel pen or acrylic paints to color the lips. To accentuate the lips, line the outside edges with a darker shade of red.



- For long term preservation, spray head with matte acrylic spray. (We recommend Blair brand as its propellant does not interact with the clay over time and become sticky.) This will preserve the pen, chalk, and/or paint used in coloring the face.
- Cut lengths of curly hair. Begin to apply hair at the base of the neck with FABRI-TAC. Work upwards toward the crown of the head. Add hat, ribbon, or style the hair when the glue is completely dry.



BODY:

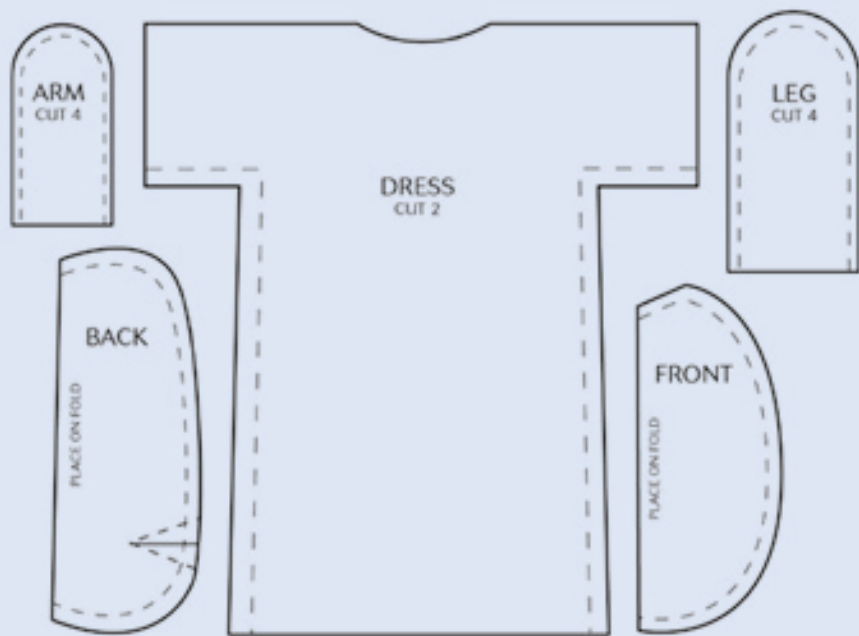
- Cut body pieces from muslin or your choice of fabric. Note: Pre-assembled bodies may be purchased from various manufacturers if preferred.
- Sew darts in the lower back piece. This will give your doll more shape.

- With right sides of the fabric together, stitch the body pieces together leaving an opening for the head. Turn the piece right side out.
- Pour a tablespoon or more of Bean Bag Fill into the doll body. This will give added weight to your doll.
- Stuff the body with polyester fiberfill.
- With right sides of fabric together, stitch the arm and leg pieces.
- Turn each piece right side out. You may need a knitting needle to help you turn the piece.
- Stuff the arms and legs with polyester fiberfill.
- Gather the ends of the arms, insert the hands, and pull thread tight and secure.



DRESS:

- Trace and cut dress pattern. Place right sides of fabric together, and stitch the sleeve and dress sides. Turn the dress right side out.
- At the back of the dress, cut a 2-8 inch slit from the neckline down. This will allow you to dress the body.
- Slip body down into dress. Place a tab of glue at the neck slit.
- Add accessories such as ribbons, lace, flowers, hats, and you're done!





Making a one-of-a-kind doll is easier than you think! By using Sculpey brand oven-bake clays and Polyform Flexible Push Molds you are well on your way to creating your very own keepsake. The basic technique shown in this guide can be used for all of our Doll Push Molds to make whatever your imagination can dream up... Old World Santa's, Grandma and Grandpa, Whimsical Characters, Angels and more!

MATERIALS NEEDED:

- Polyform Flexible Doll Pushmolds (APM 22, APM 23, APM24 or APM25)
Note: we used APM 22
- Premo! Sculpey, Super Sculpey or Sculpey® (We used Premo! Sculpey Beige 5092 (2 blocks) for this project)
- Gel pens: white, black, red, light blue, brown
- Felt for doll clothes
- FABRI-TAC Adhesive
- Curly hair
- Toothpicks
- Blushing powder of desired color
- 8 inch square of muslin or other fabric for doll body Accessories for doll
- Polyester fiberfill
- Beanbag fills for weight



WHAT IS POLYMER CLAY?

Sculpey brand polymer clays are non-toxic, man-made modeling materials that work and feel like ceramic clay, but won't dry out when exposed to air. They come in over 90 colors, and become permanently hard after baking in a regular oven or toaster oven at 275°F (130°C) (ceramic clays are fired in a kiln at 1500°F).

Sculpey brand polymer clays come in seven different types, each with a distinctive feel, texture, and finished look. Once baked, they can be sanded, carved, drilled, buffed, and re-baked if necessary.

Work surfaces include paper, aluminum foil, and glass, marble, metal or ceramic. Do not work on plastic or finished wood surfaces. Paint with water based liquid acrylics or Sculpey glazes. When gluing polymer clays, we suggest Super Glue Gel® (not liquid), silicone glues (Goope®, E-6000®), Duco-Cement®, Locitie® Superglue and flexible types of hot melt glue used in electric glue guns.



Polyform™

"The Sculpey® People!"

Polyform Products Company, Inc. Elk Grove Village, IL 60007 USA



For Projects and Product information,
visit us at: **www.sculpey.com**

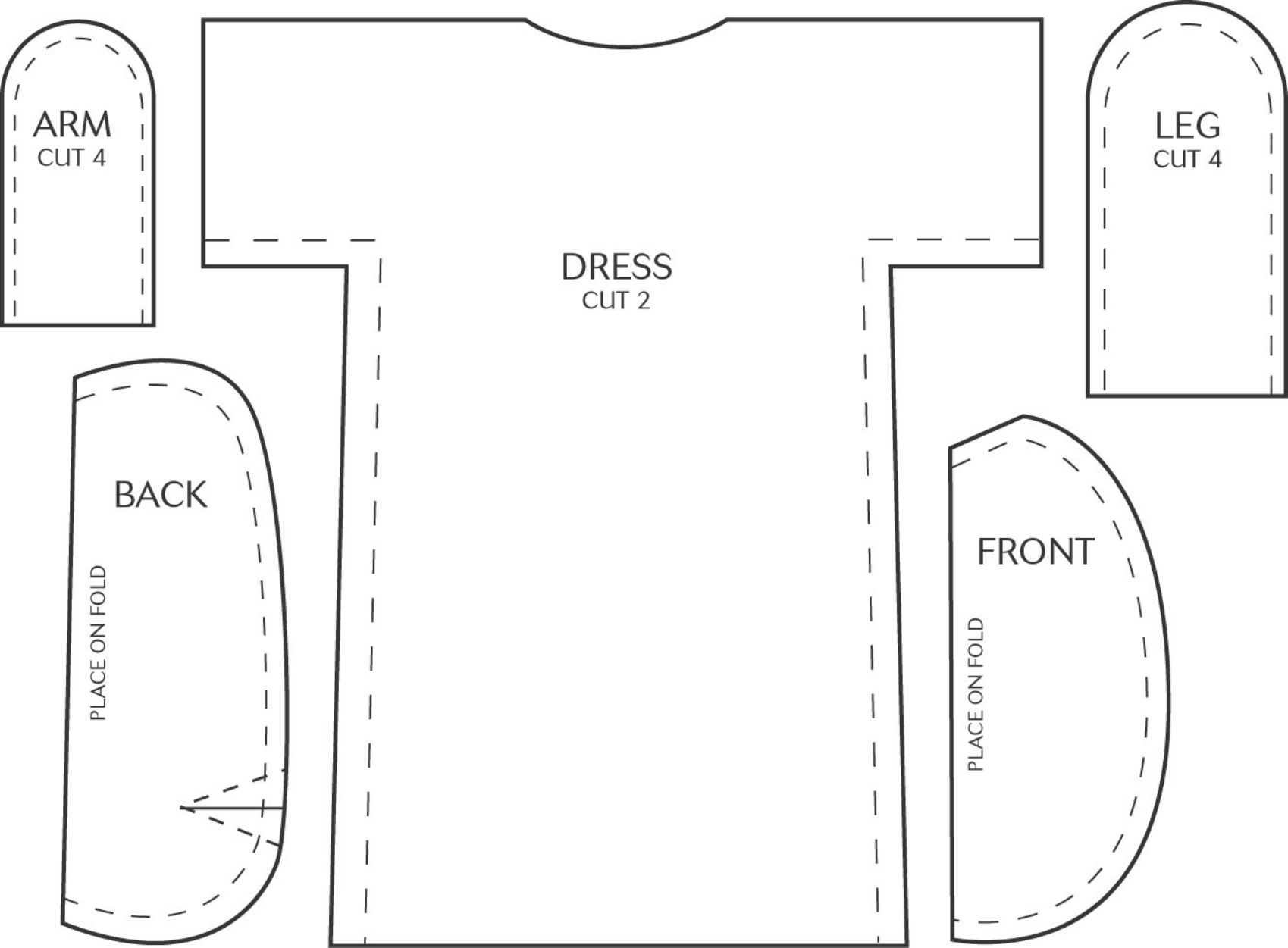
Item #: CFPS019

© 2001 Polyform Products Co., Inc.
Made in U.S.A.



"All Sculpey clay products
are certified AP Non-toxic"





ARM
CUT 4

LEG
CUT 4

DRESS
CUT 2

BACK

PLACE ON FOLD

FRONT

PLACE ON FOLD