

Brought to you by sewingideas.com

Little Princess Baby Bib



Shopping List:

- | | |
|---|--|
| <input type="checkbox"/> SINGER® Futura™ sewing & embroidery machine | <input type="checkbox"/> Bobbinfil thread |
| <input type="checkbox"/> Two 11" x 12" solid-color cotton fabric pieces | <input type="checkbox"/> Fusible thread |
| <input type="checkbox"/> One 11" x 12" low loft cotton batting piece | <input type="checkbox"/> Rotary cutter, mat and ruler |
| <input type="checkbox"/> ½ Yard contrasting cotton fabric for bias binding
OR 1 package purchased extra-wide double-fold bias tape | <input type="checkbox"/> Water soluble marker |
| <input type="checkbox"/> 1" Bias tape maker
<i>(not needed if using purchased bias tape)</i> | <input type="checkbox"/> Ballerina Bear #302419 embroidery design
<i>(available for purchase from www.myembroideries.com)</i> |
| <input type="checkbox"/> All-purpose thread to match both fabrics | <input type="checkbox"/> Bib Pattern – Included with these instructions |
| <input type="checkbox"/> Embroidery threads* | <input type="checkbox"/> OPTIONAL: Even Feed Foot for quilting the fabrics together |

*This sample was embroidered using Robison-Anton Super Brite® polyester threads:

French Toast #9066 • Sand Dune #5777 • Angela Blue #9060 • Peacock #5810 • Black #5596 • Lemon Fluff #9003

Little Princess Baby Bib – Sewing Instructions:



Fabric Preparation:

1. Using a ruler and a water soluble marker, draw sewing lines on the right side of one of the solid cotton fabric pieces, creating a grid. First, mark lines so they are spaced 1" apart diagonally across the fabric. Then, mark lines so they are spaced 1" apart diagonally across the fabric in the opposite direction. (See illustration A)
2. Lay the remaining solid cotton fabric piece face down on a flat surface. Place the batting on top of the fabric. Then lay the marked fabric piece face up on top of the batting. Secure with pins.

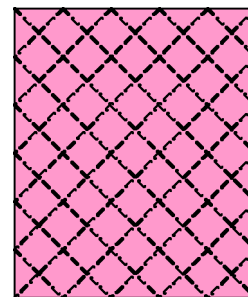


Illustration A

Quilting:

1. Set the machine for standard sewing mode. Thread the machine with the all-purpose thread that matches the solid cotton fabric. Attach the Even Feed Foot, if available, which will help keep fabric layers from shifting when quilting. Select the straight stitch, with the stitch length set to 4.
2. Begin sewing across one of the sewing lines. Continue to sew across all of the lines, until the fabric is completely filled with stitching. *Tip: Be sure to sew each row in only one direction, as this will keep the fabric from pulling or stretching, creating uneven lumps or distortion of the fabric.*

Embroidery:

1. Set the machine for embroidery mode. Thread the bobbin with bobbinfil thread. Place the fabric (that has now been quilted) in the large embroidery hoop, centering the fabric in the hoop. Attach the hoop to the embroidery arm of the machine.

2. At the Computer:

- a. Download the **Ballerina Bear** design from www.myembroideries.com website.
- b. Open the FUTURA™ software.
- c. Open the **Ballerina Bear** design.
- d. Select the **Design** pull-down menu.
- e. Select **Change Size**.
- f. Click the % box.

- g. Click and run the cursor over the **100** in the "X" box to highlight the box, enter **125**. Click the **Activate Stitch Processor** box, and then click **OK**.

- h. Select and move the bear design to the bottom center of the hoop. To do this, hold the left mouse button while dragging the cursor over the entire bear, starting at the top left corner of the bear. This will create a bounding box around the bear; release the mouse button when the box encloses the bear completely. The bear is now "grayed-out" and can be moved to the bottom of the hoop. Note that the cursor will change to the "move" hand symbol. Click and drag the bear to the bottom center of the hoop. Click the cursor off of the bear, and the bear will de-activate and stay in place. (See illustration B)

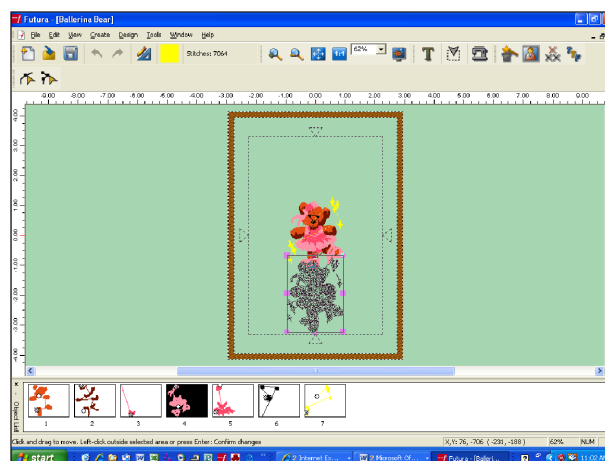


Illustration B

Little Princess Baby Bib – Sewing Instructions: *(continued)*



Embroidery: *(cont.)*

- i. Click on the **Lettering** tool (**T**) on the tool bar to activate the Lettering menu.
- j. To change the color of the lettering: click on the **Current Color** box on the tool bar. Bring the cursor down to the rainbow area of the box (notice that the cursor turns into an “eyedropper”). Click on the desired color, and then click on **OK**. (See *illustration C*)
- k. Click the cursor into the **Text** box. Type the letters: **Little Princess**.
- l. Select the **Kids** font from the **Font** box by using the arrow keys on the box to scroll down to select the font.
- m. Change the numbers in the **Height** box to .43. Do this by clicking and dragging the cursor over the current numbers in the box. This will place a blue beam over the current numbers; type in .43. Note that this changed the size of the letters in the hoop. (See *illustration D*)
- n. Click on the **Frames** box. Select the “wave” frame, the 5th frame in the 3rd row.
- o. Place the cursor over the letters in the hoop, and move the letters down over the top of the bear’s head, centering the letters in the hoop. Left click to set the lettering.
- p. Select the **Design** pull-down menu.
- q. Click on **Center Design**.
- r. Click on the **Lettering** tool (**T**) on the tool bar to de-select the Lettering function.
- s. Some colors of this design will be repeated. To eliminate excess color changes, click and drag the colors in the **Color** box list to reorder the colors. Click on the **Tools** pull-down menu.
- t. Click on **Color Block** list, and the color blocks will show up under the hoop area on the screen. The lettering will be sewn in the same color as the main dress and slippers. Click and drag the block with the lettering over to the main dress and slippers block #4. Release the mouse button and the color blocks change position. Note that the entire numbering sequence has been changed. The lower shading of the dress, block #3, will be sewn in the same color as the rest of the details of the dress, block #6. Click and drag block #3 over Block #6.
- u. Go to **File** in the Main Menu, then scroll down and click on **Transmit to Futura Machine** on the tool bar.
- v. Click on **Send Design** to send the design to the machine.

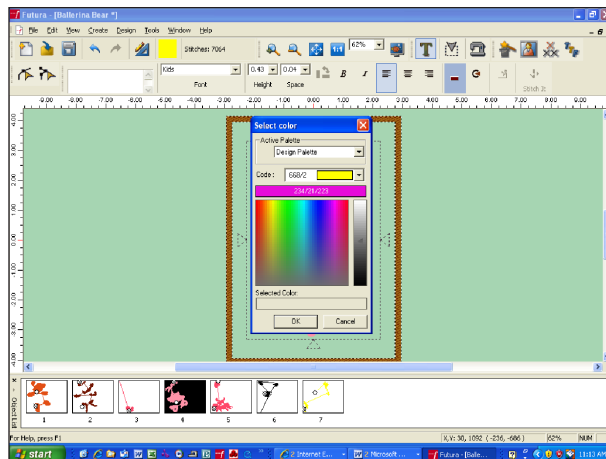


Illustration C

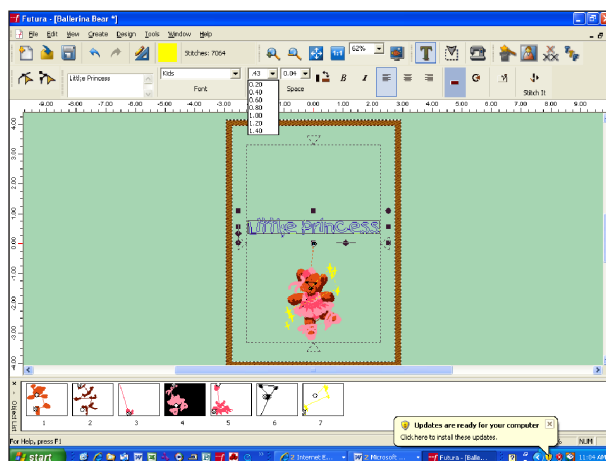


Illustration D

Little Princess Baby Bib – Sewing Instructions: *(continued)*



SINGER®

Embroidery: *(cont.)*

3. You are now ready to embroider the design. Embroider the design using the following color order:

Color #1 – French Toast #9066
Color #2 – Sand Dune #5777
Color #3 – Angela Blue #9060
Color #4 – Angela Blue #9060
Color #5 – Peacock #5810
Color #6 – Peacock #5810
Color #7 – Black #5596
Color #8 – Lemon Fluff #9003

When the design is finished embroidering, remove the fabric from the hoop and press. Pin the bib pattern to the fabric, centering the design. Cut out the bib.

Bias Trim and Ties:

1. Remove the embroidery unit from the machine and set the machine back to standard sewing mode. Thread the needle with the all-purpose thread that matches the contrasting fabric. Thread the bobbin with the fusible thread. Select a straight stitch.
Please note: If making your own bias tape, follow steps, 2 through 4. If using purchased bias tape, skip to step 4.
2. Using a ruler, rotary cutter and mat, cut 2" wide strips on a bias from the contrasting fabric. Cut enough strips of bias for 1¾ yards.
3. Join the strips together at the ends using a diagonal seam to create one long continuous strip of bias.
4. Cut one of the ends of the bias strip at an angle. At the iron, feed the angled end into the bias tape maker. Pull the strip through the bias tape maker, pressing the strip as it exits. Open up one of the folded edges of the bias strip. Working from the wrong side of the bib, place the unfolded, raw edge of the bias strip to the outside edge of the bib. Sew the strip to the bib using a scant ½" seam allowance. Trim off excess strip.
5. Bring the bias strip around to the right side of the bib, enclosing the raw edge. Press the bias in place, fusing the fusible thread to the strip. This is a temporary bond so this will need to be stitched down (see step 6).
6. Replace the bobbin thread with all-purpose thread. Stitch close to the folded edge of the strip.
7. Apply the bias strip to the neck edge of the bib in the same manner as the outside edge, this time extending about 18" off of each side to allow for the ties. Press in the raw edges of each tie end.
8. Using a straight stitch and all-purpose thread, begin stitching at one of the tie ends; continue stitching around the neck edge and down the remaining tie end.

Little Princess Baby Bib –
Sewing Instructions: *(continued)*



SINGER®

Copy each piece and enlarge to 150%, print two copies then join by taping the pieces together.

